

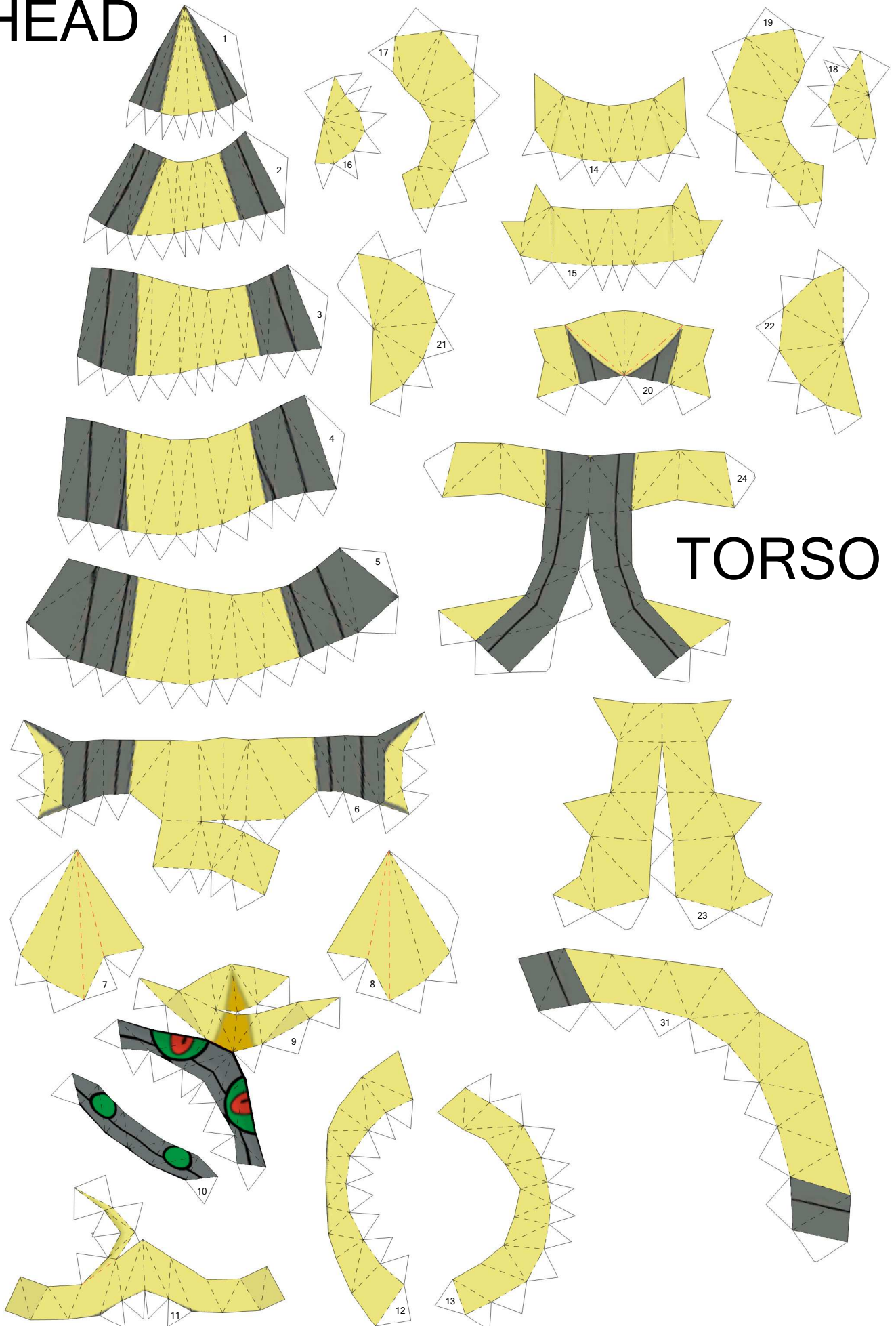


Arceus

By LuIS

Paper Pokés
www.pokemonpapercraft.net

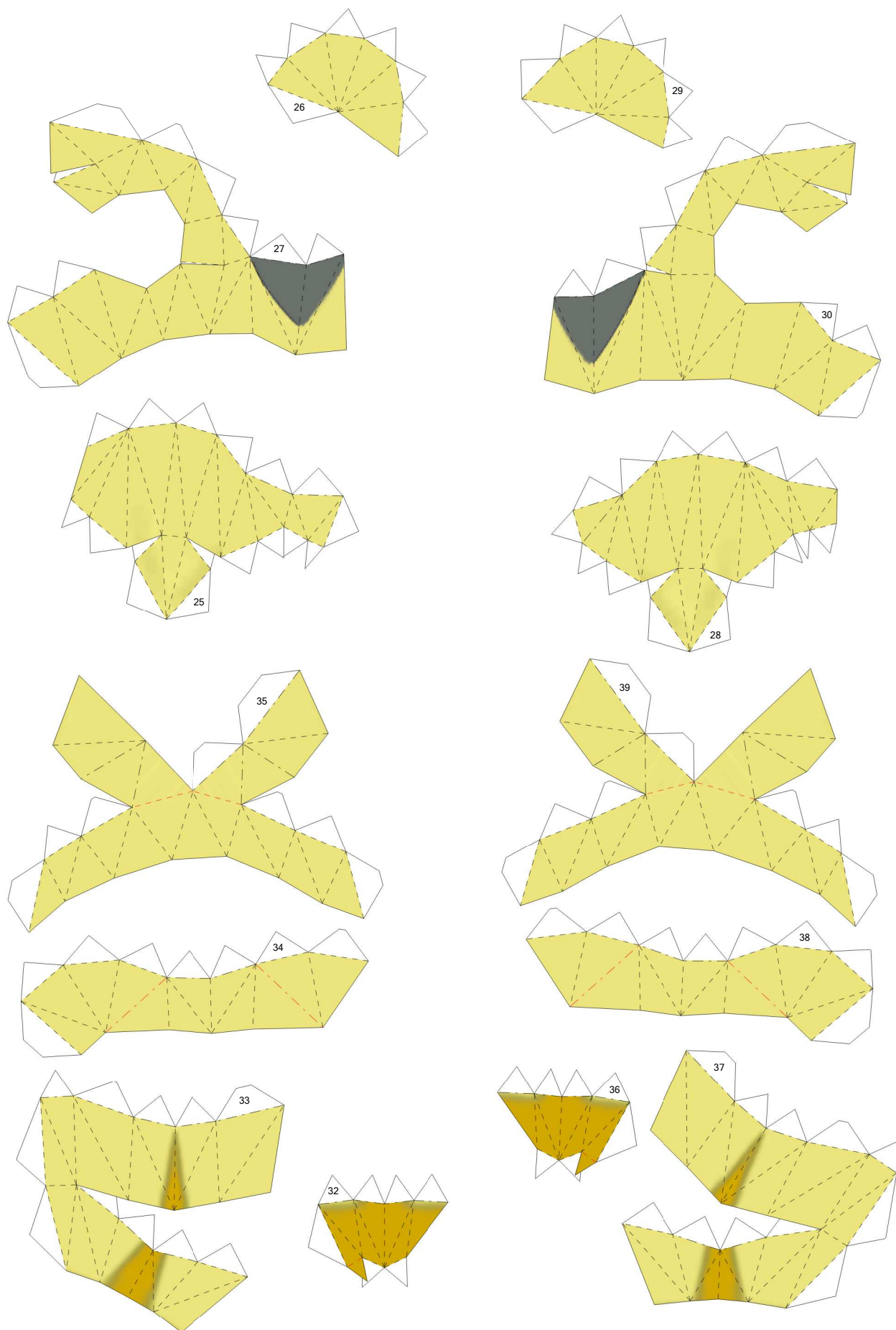
HEAD

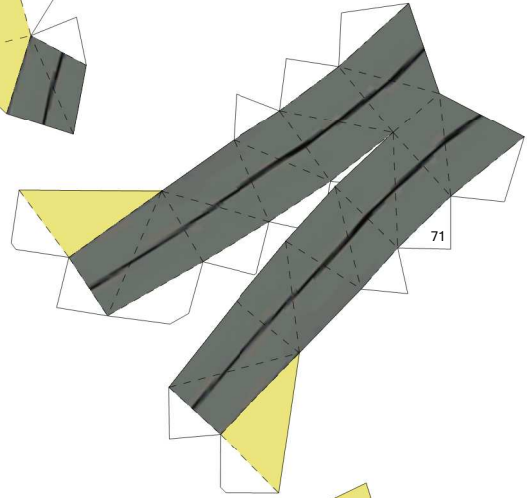
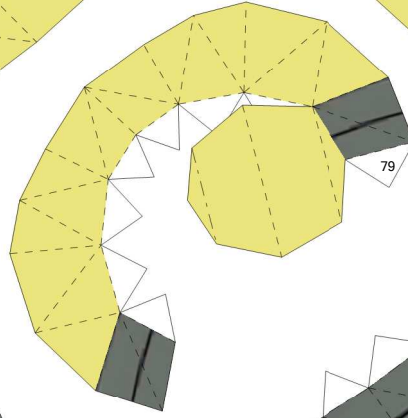
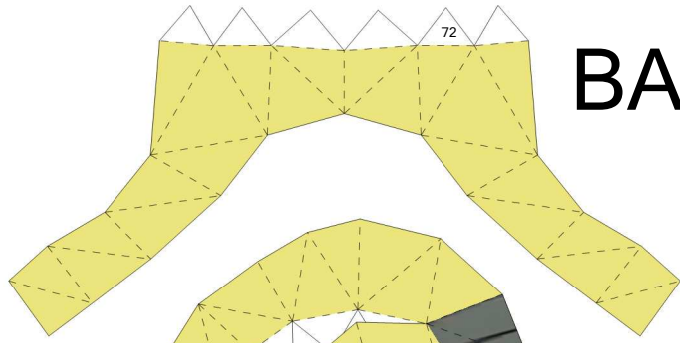
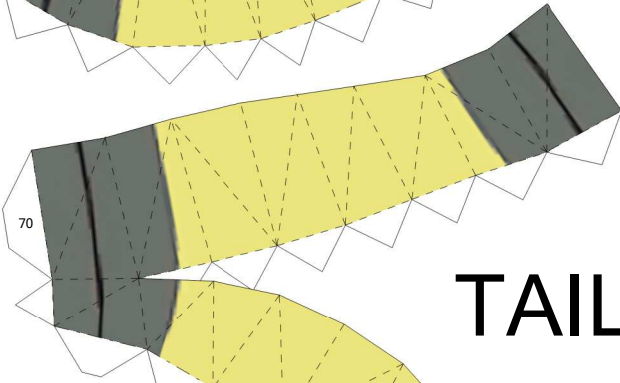
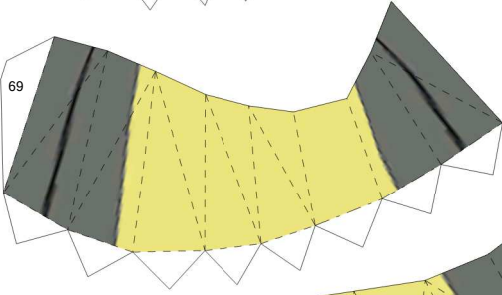
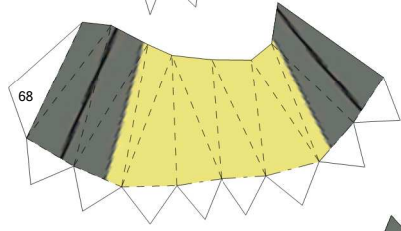
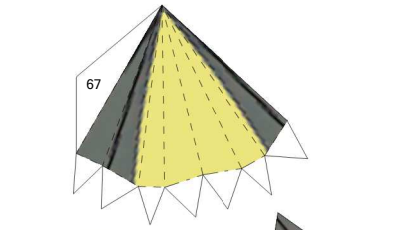


TORSO

Suggested fold lines indicated in red.

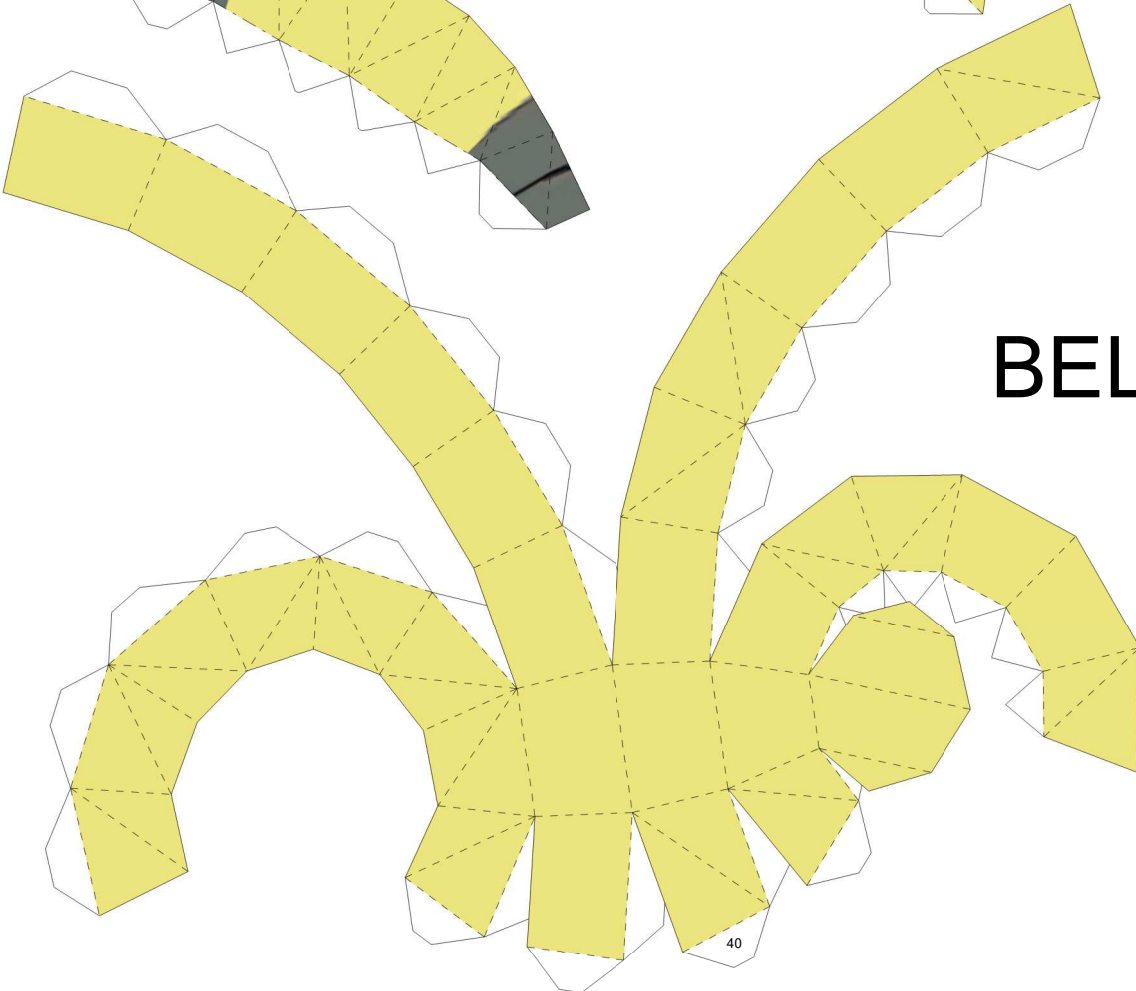
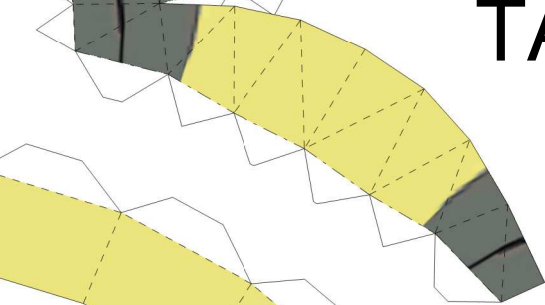
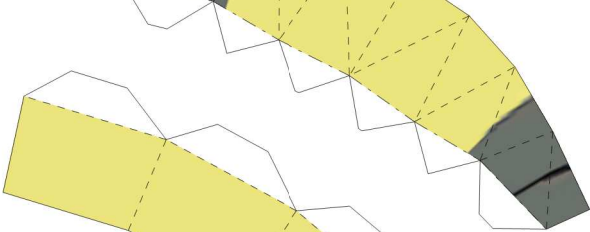
FRONT REGULAR LEGS





BACK

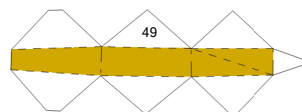
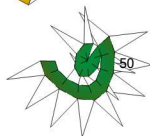
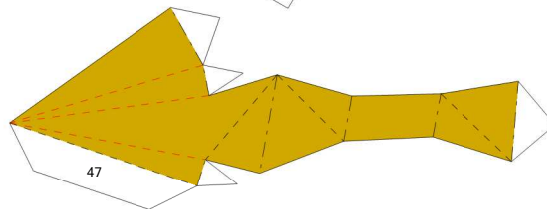
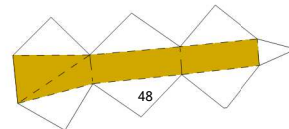
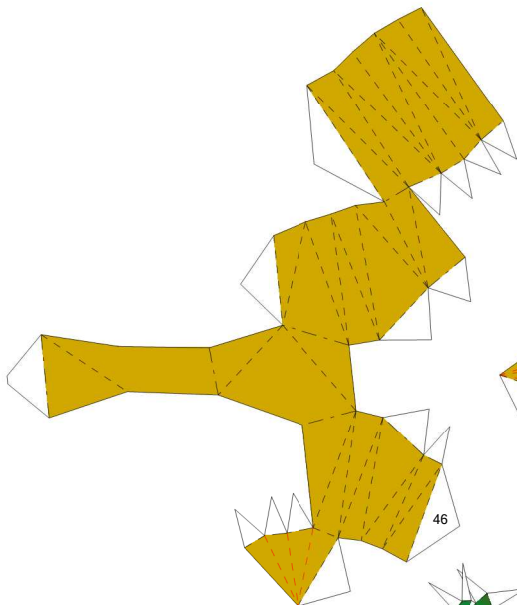
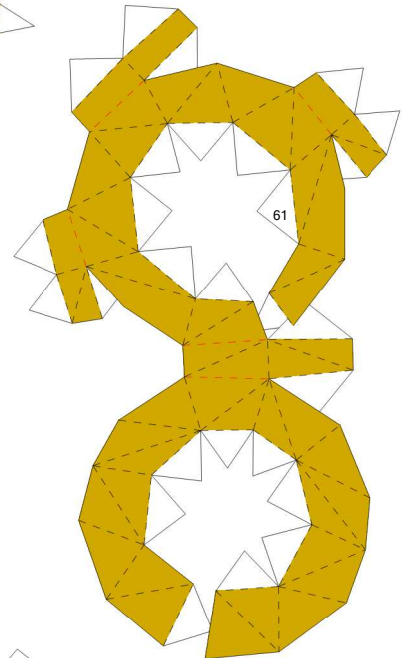
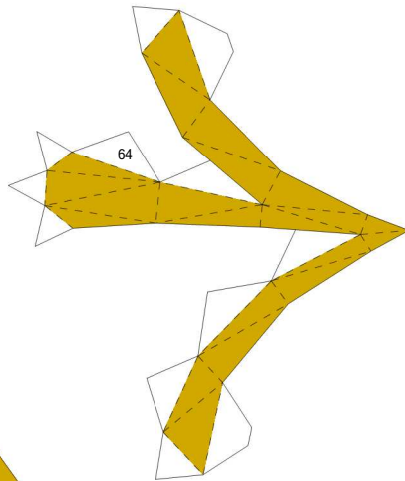
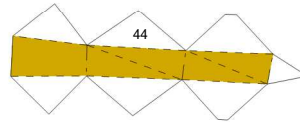
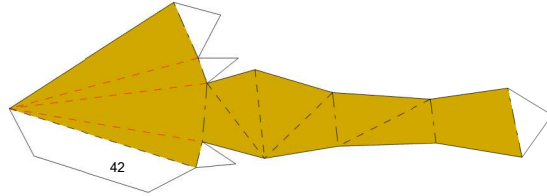
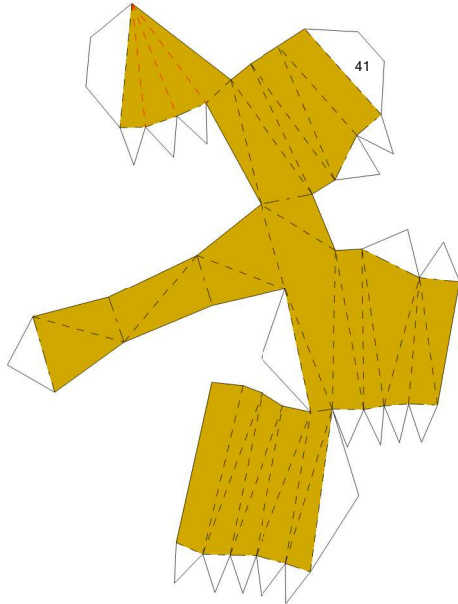
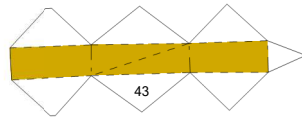
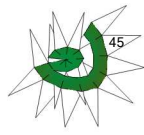
TAIL



BELLY

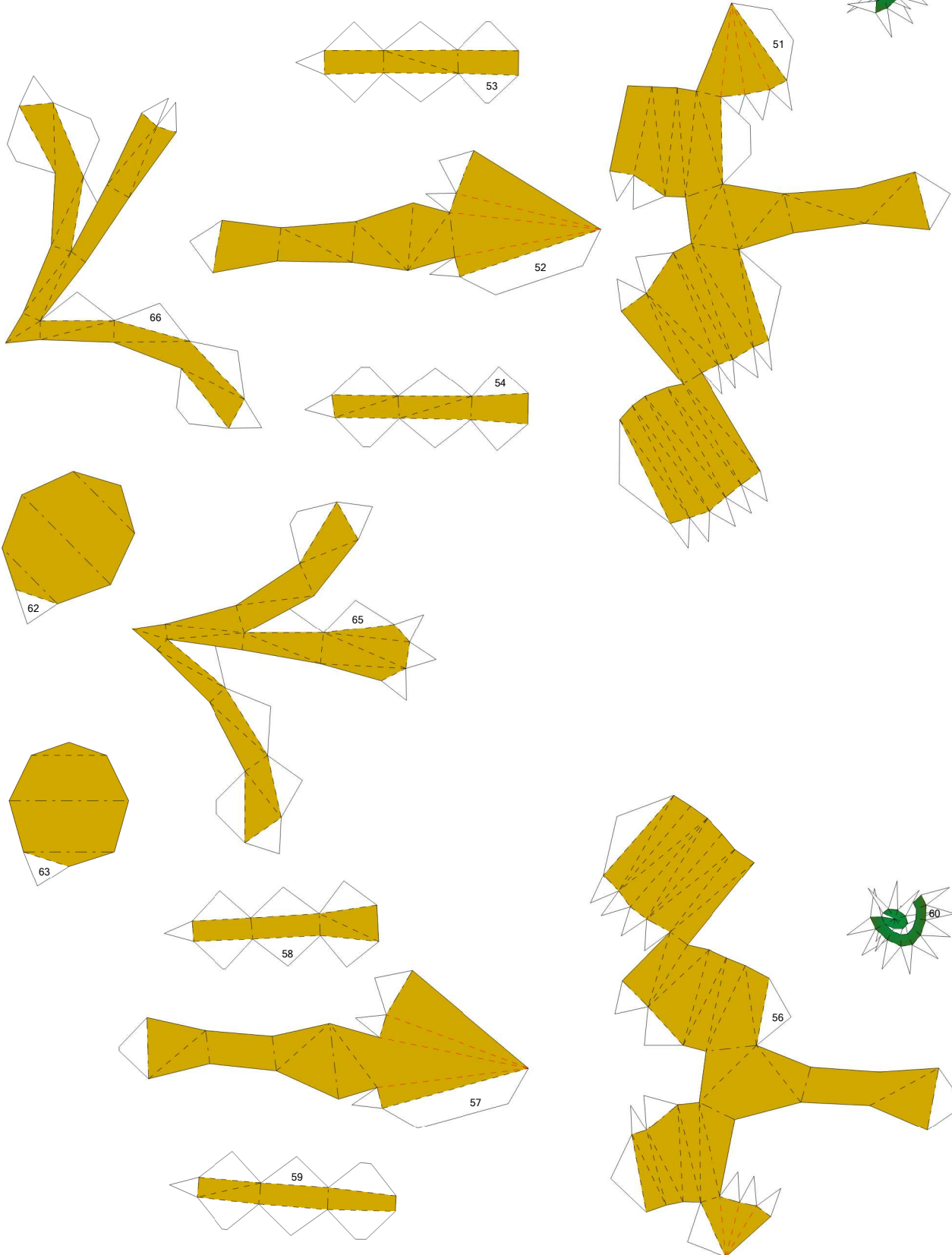
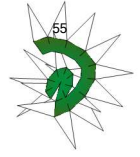
40

TOP LEFT RING SIDE



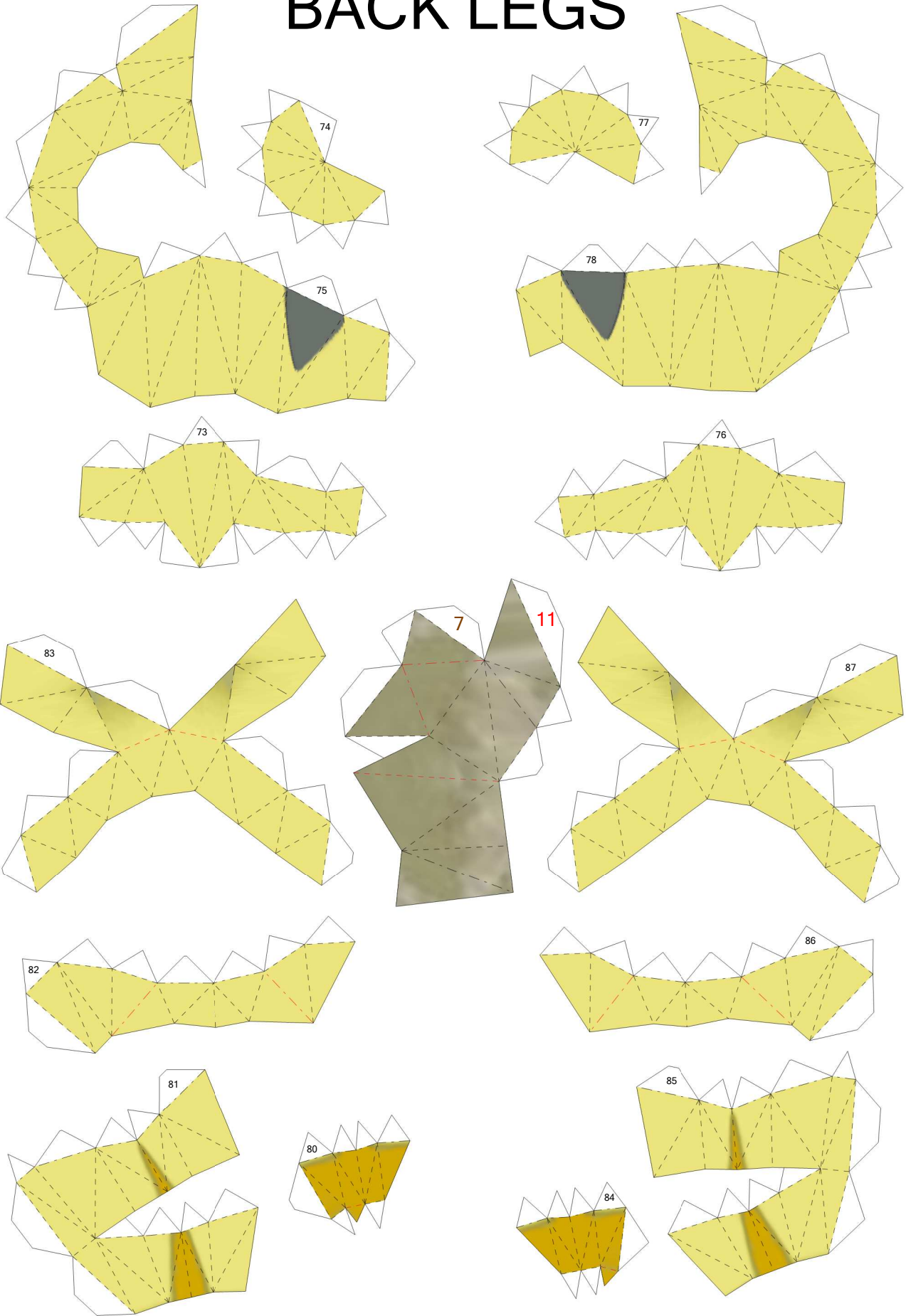
BOTTOM LEFT RING SIDE

TOP RIGHT RING SIDE



BOTTOM RIGHT RING SIDE

BACK LEGS

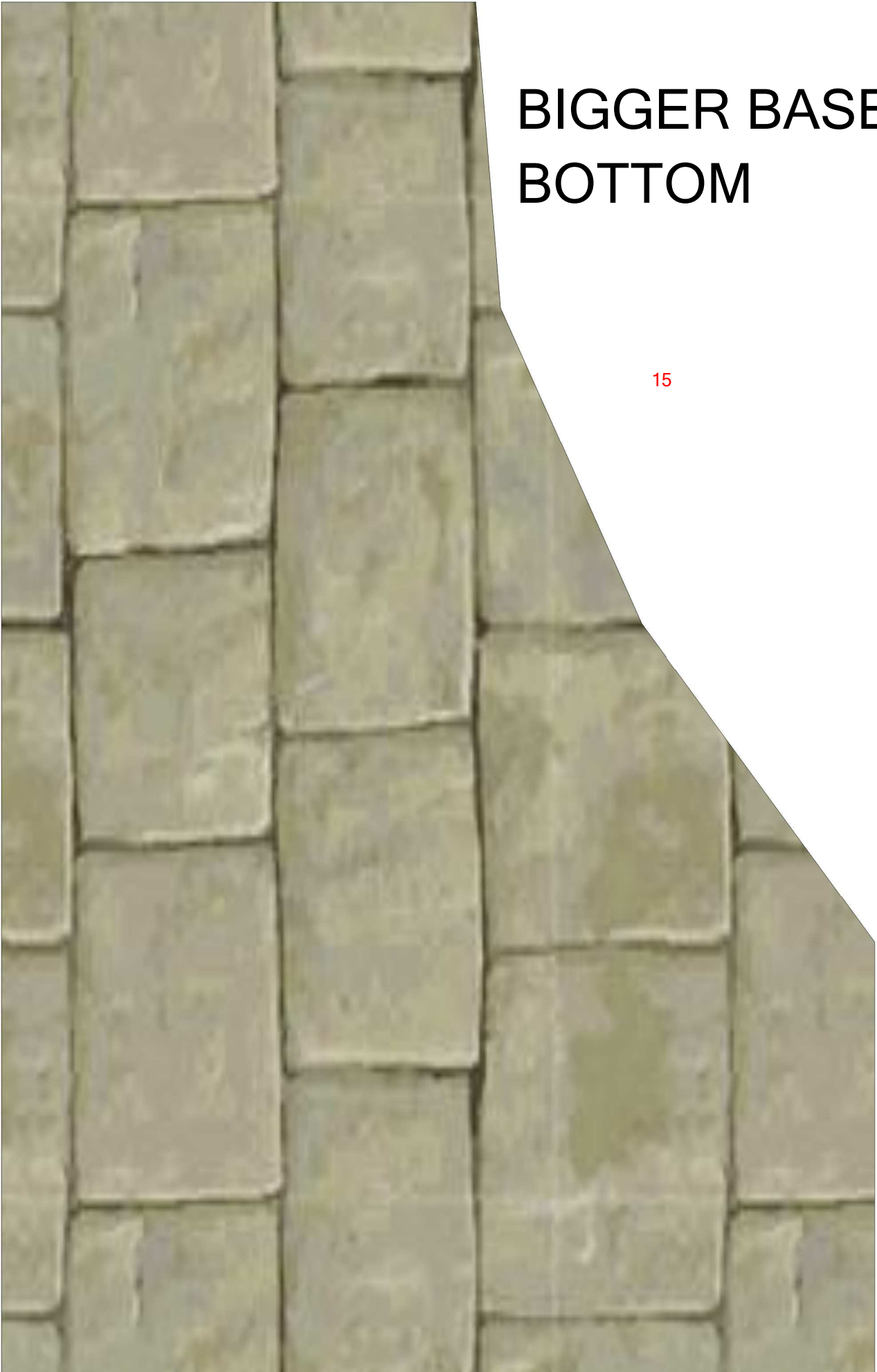


NUMBERS FOR THE BIGGER BASE
WITH THE OPTIONAL BACK COLUMN
(AS SHOWN IN THE PICTURE)
ARE COLORED RED. THE ROCKS
ARE NOT INCLUDED ON THE
NUMBERS, EXCEPT FOR THE
BACK ROCK, WHICH IS
INDICATED TO MAKE
THE MODEL STABLE.



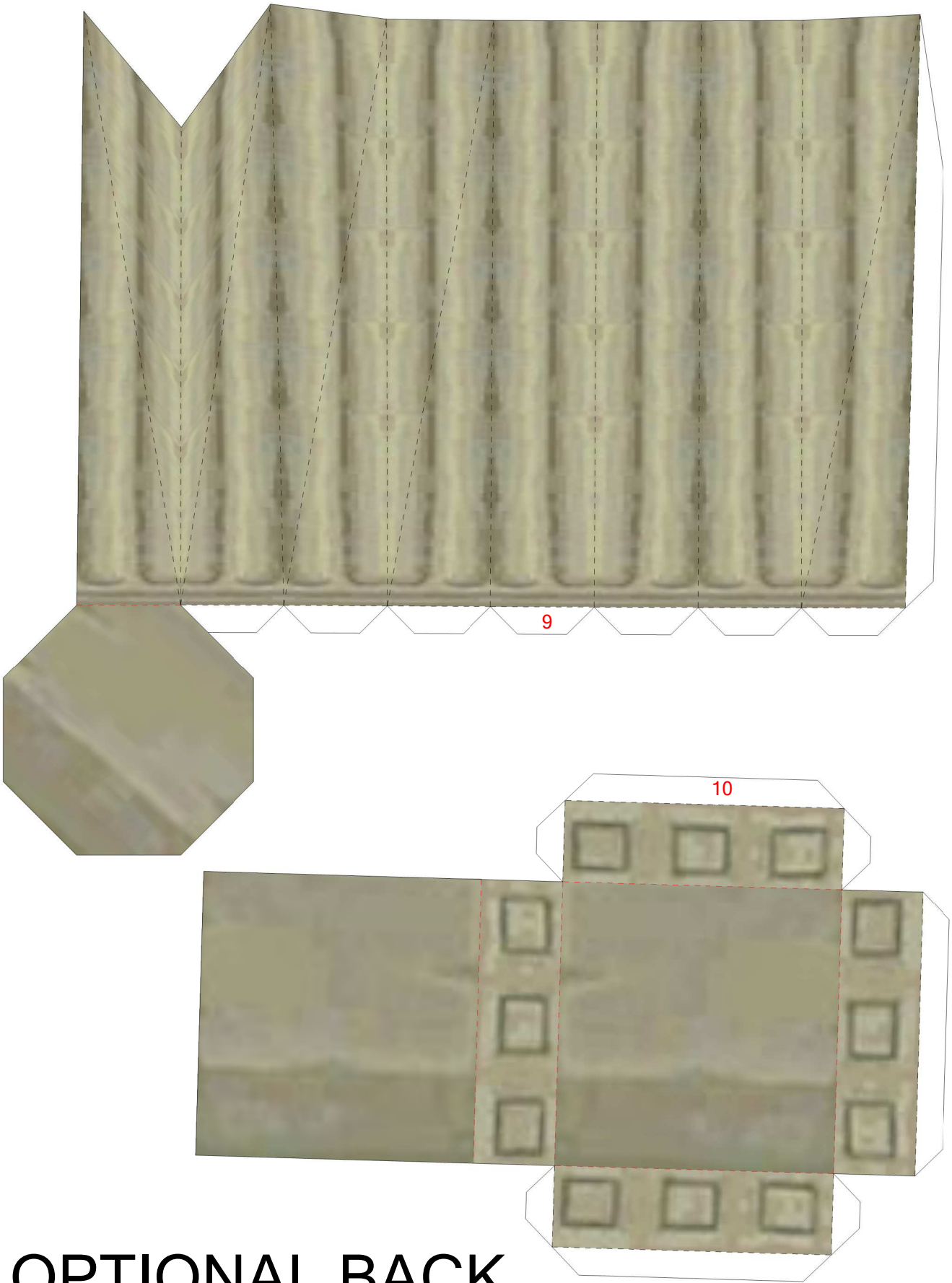
BIGGER BASE BOTTOM

15



**BIGGER BASE
TOP**

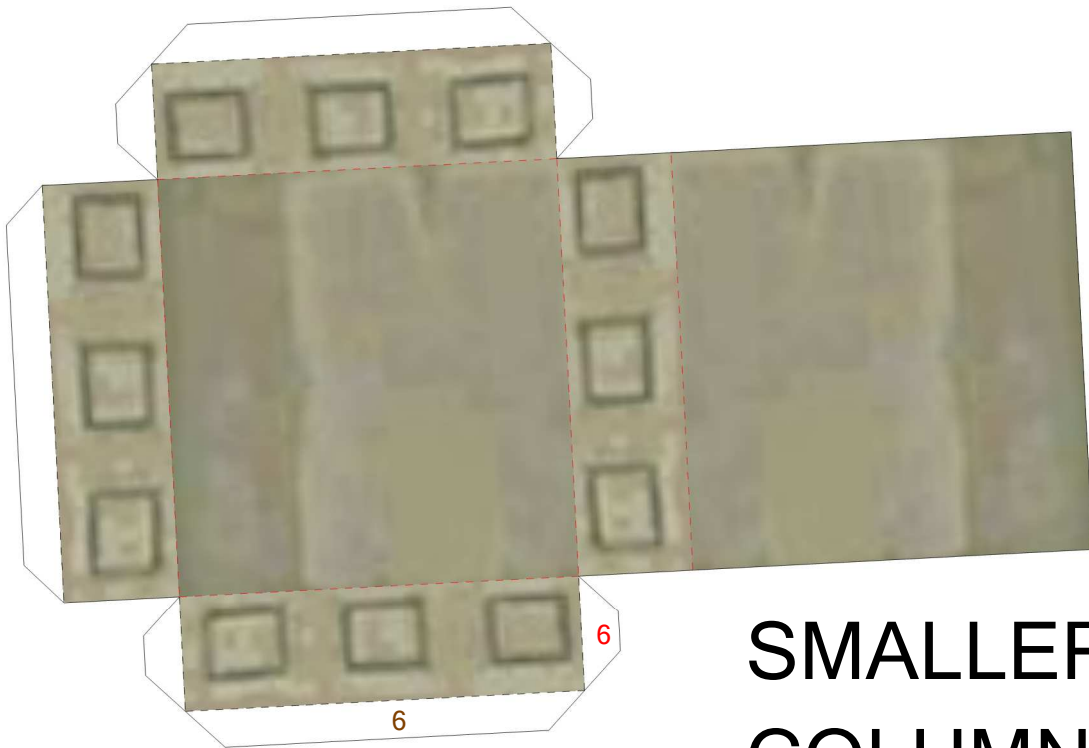




**OPTIONAL BACK
COLUMN BOTTOM**

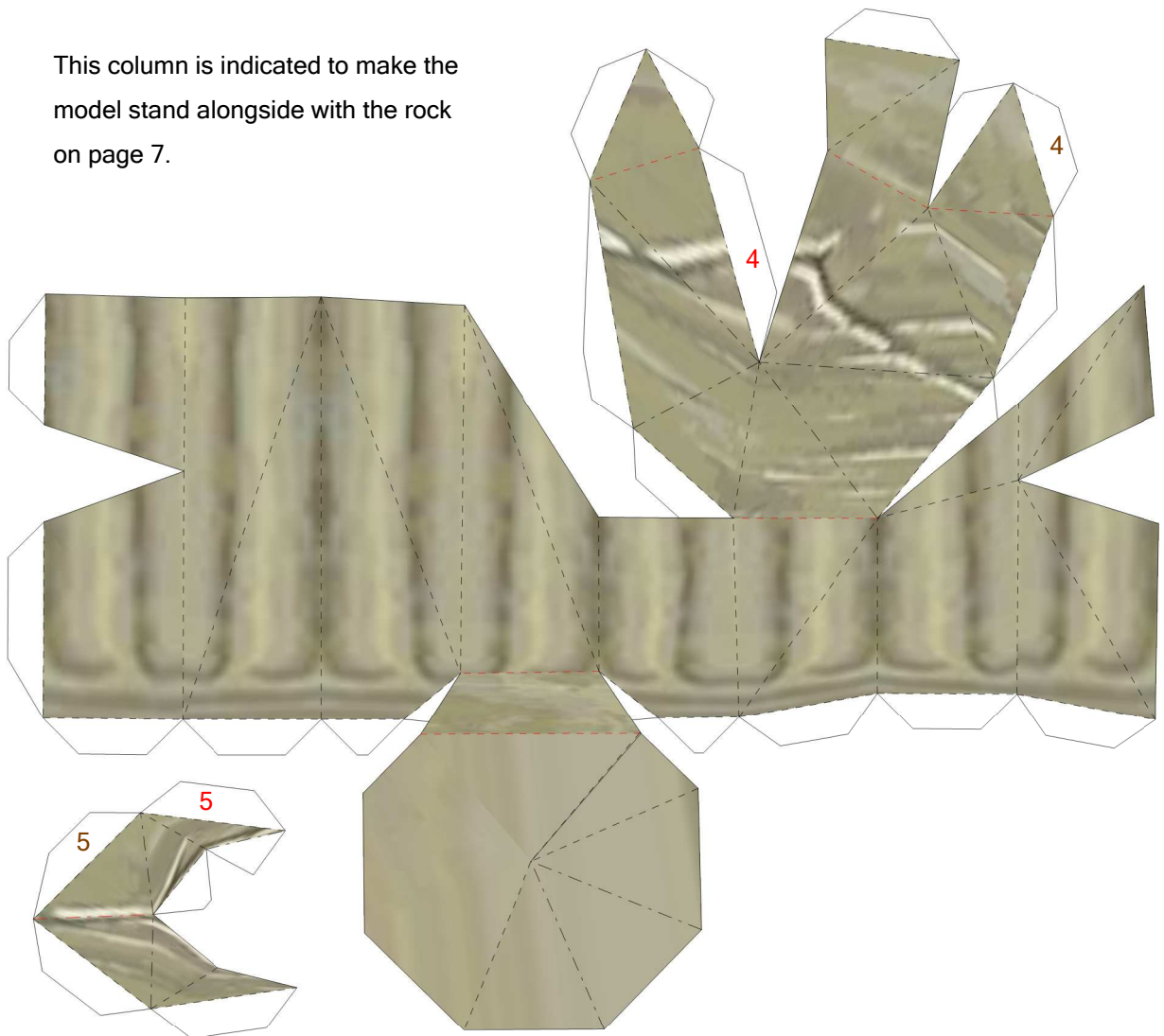


OPTIONAL BACK COLUMN TOP

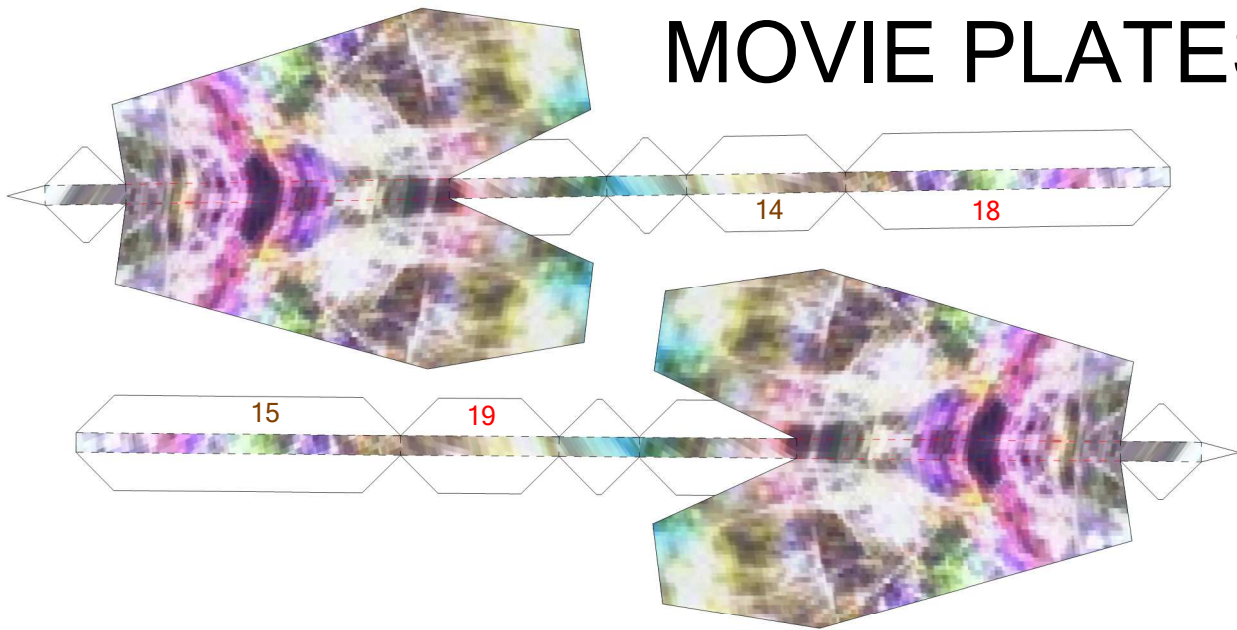


SMALLER COLUMN

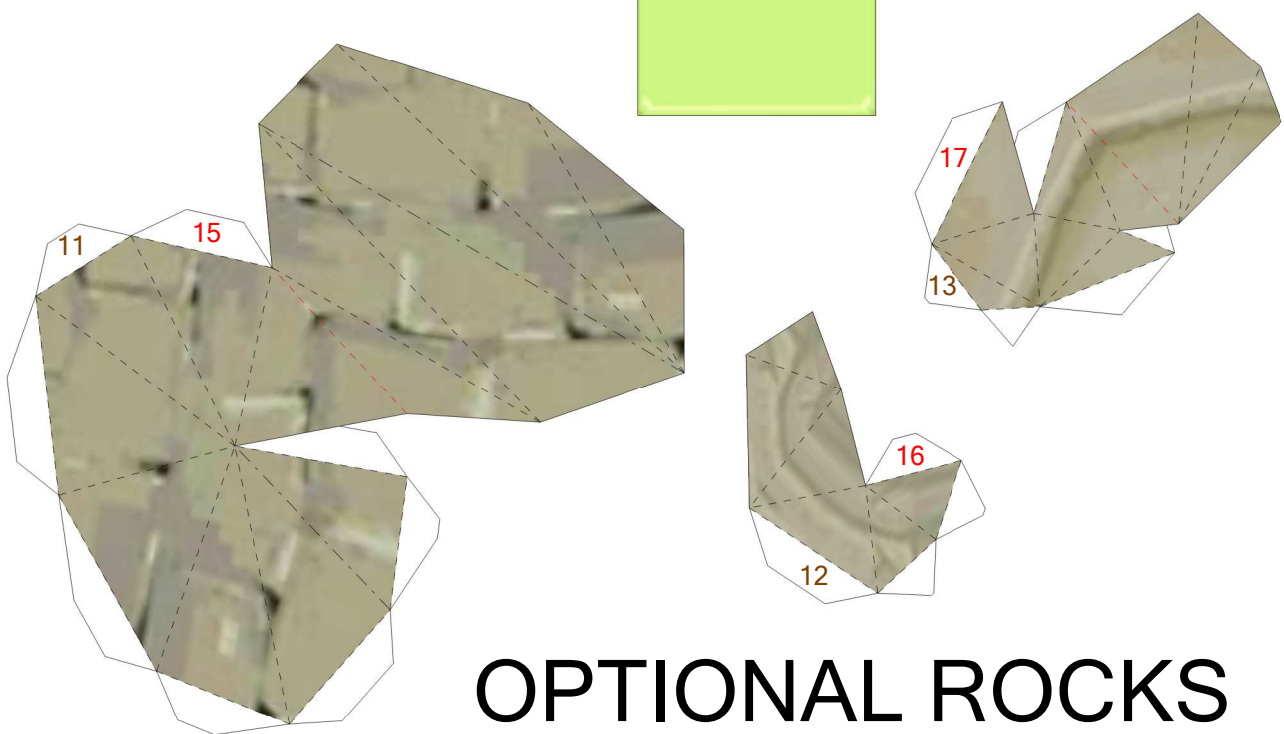
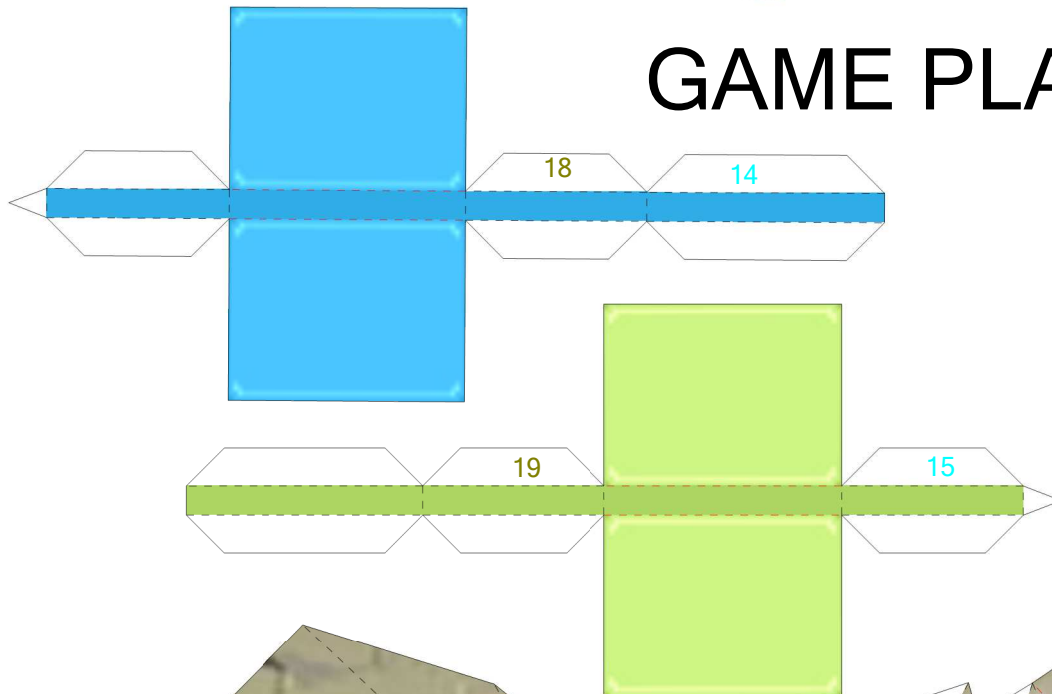
This column is indicated to make the model stand alongside with the rock on page 7.



MOVIE PLATES

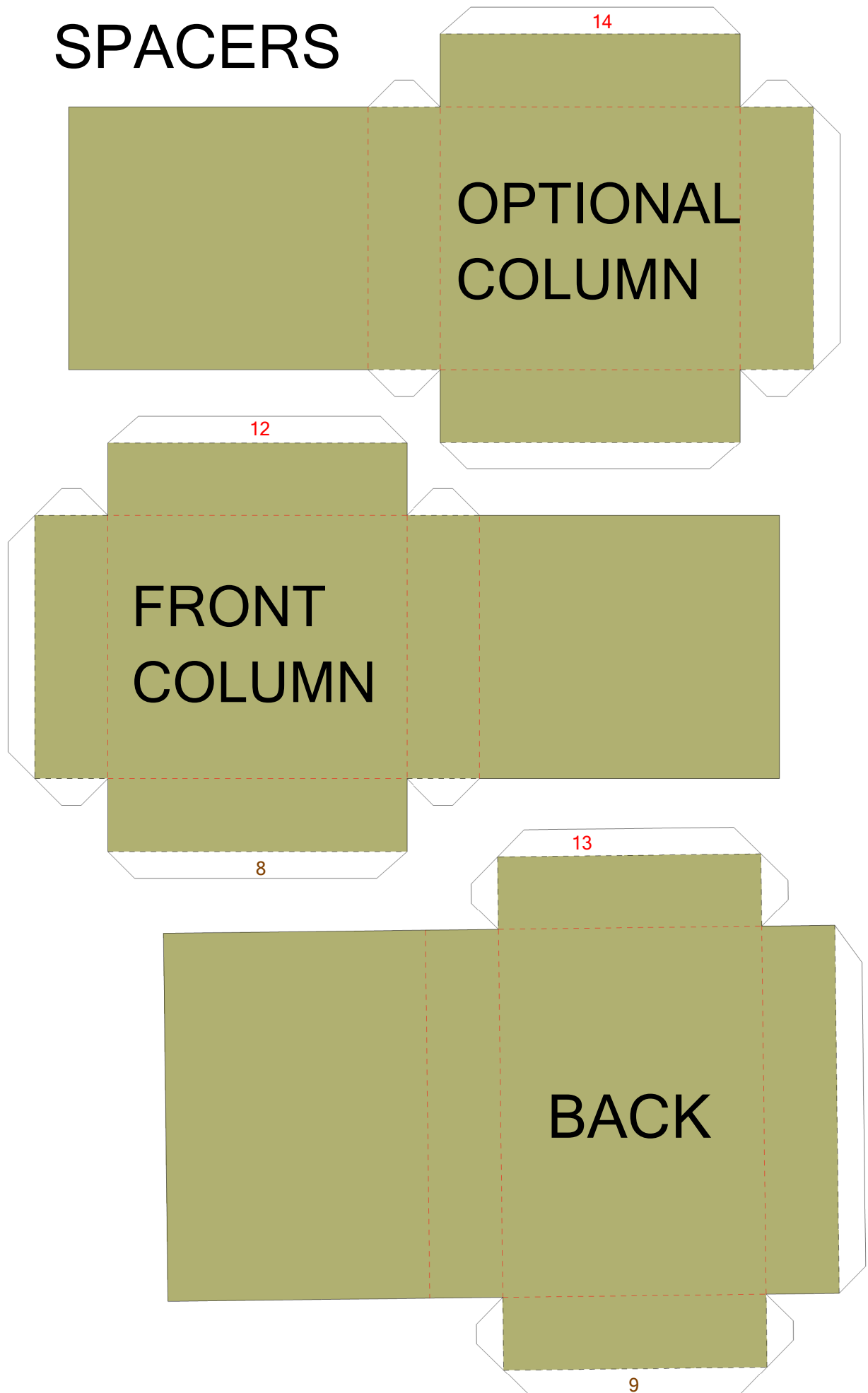


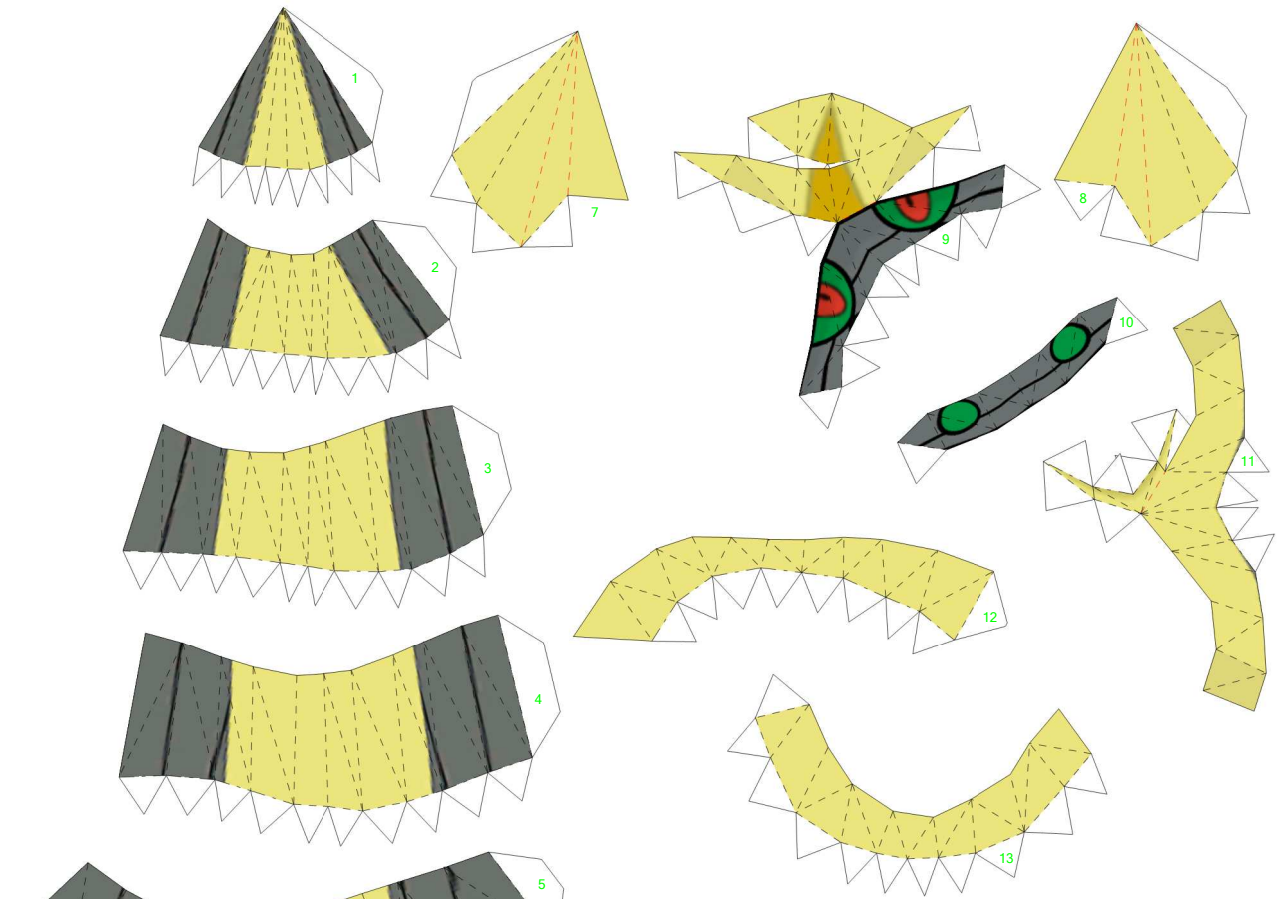
GAME PLATES



OPTIONAL ROCKS

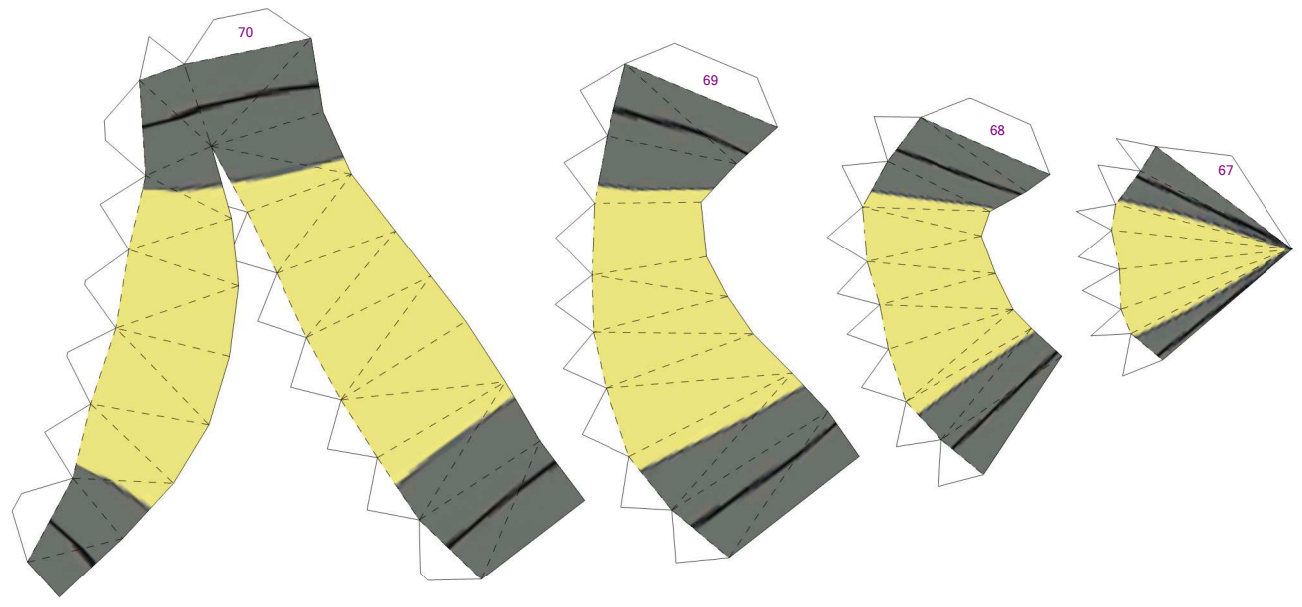
SPACERS





MIRRORED HEAD

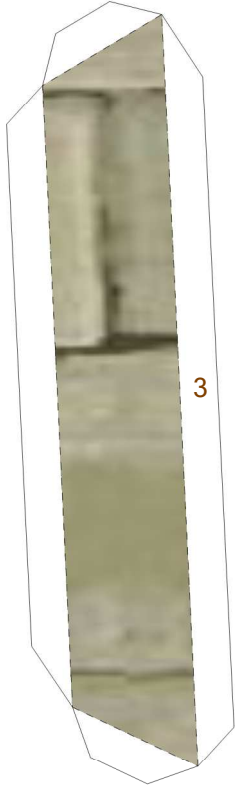
MIRRORED TAIL



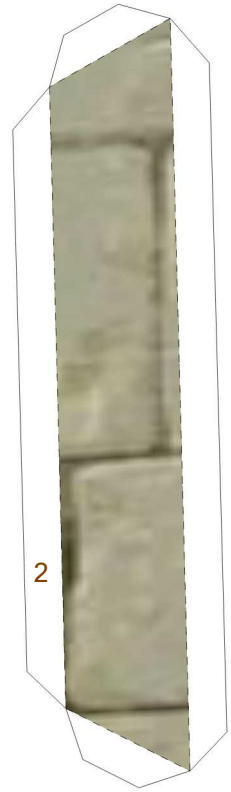


NUMBERS FOR THE
SMALLER BASE WITH
ONLY THE FRONT
STAND AND THE BACK
ROCK ARE COLORED
BROWN

10

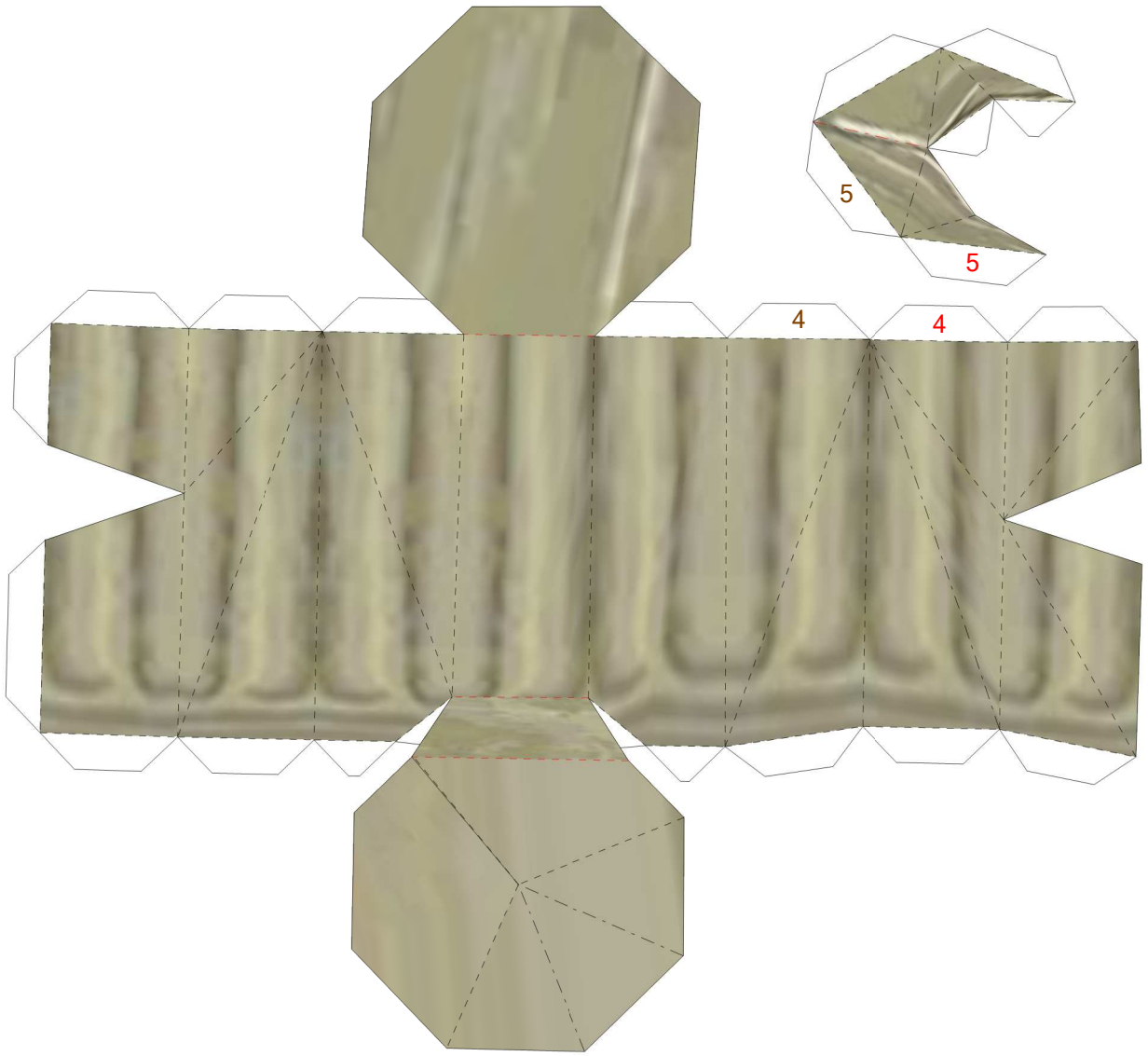


**SMALLER
BASE
BOTTOM**

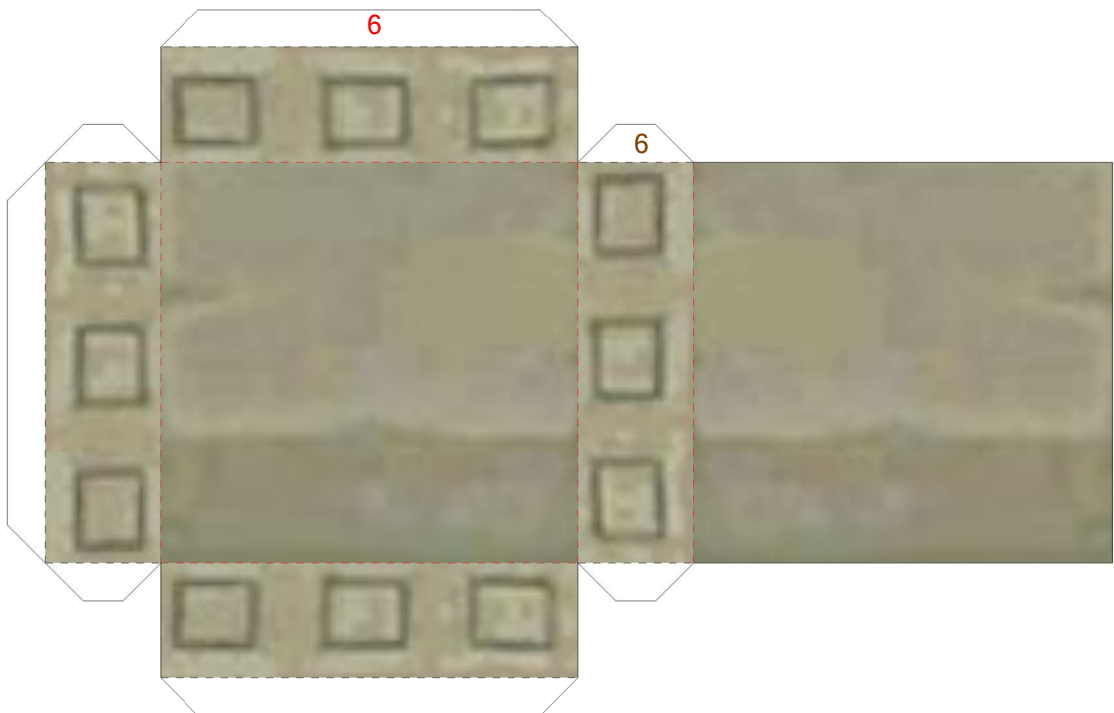


1

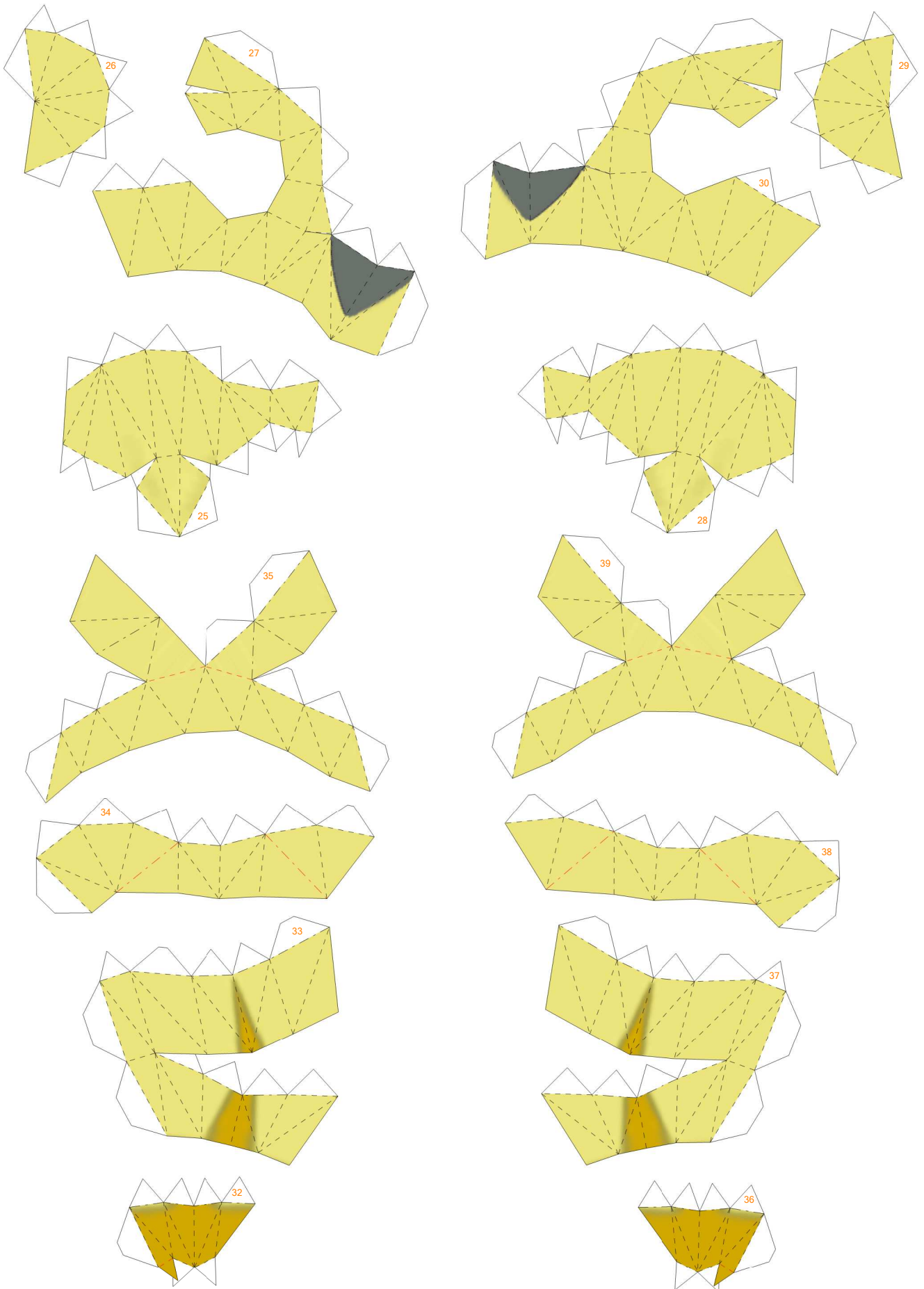
**SMALLER
BASE
TOP**

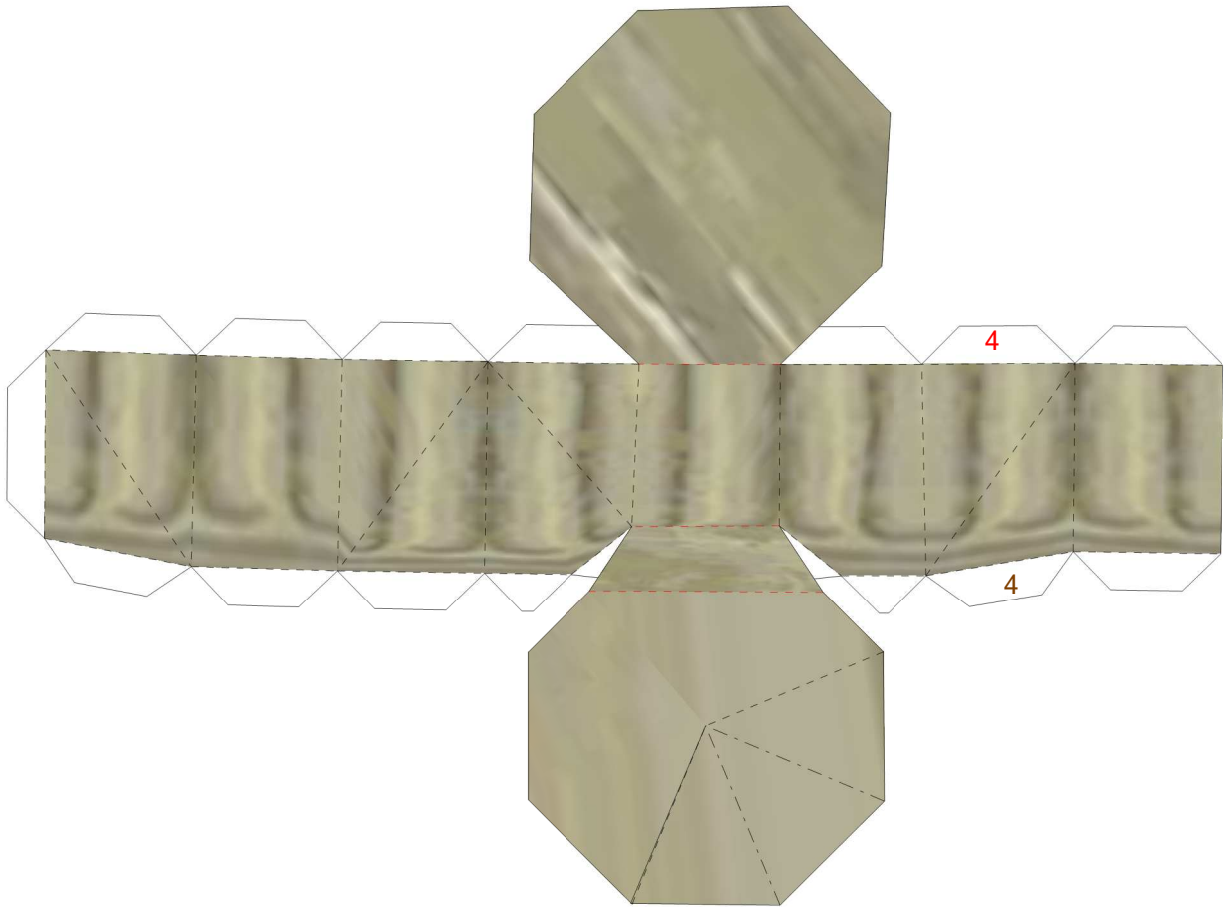


UPPER LEVELED LEGS STAND

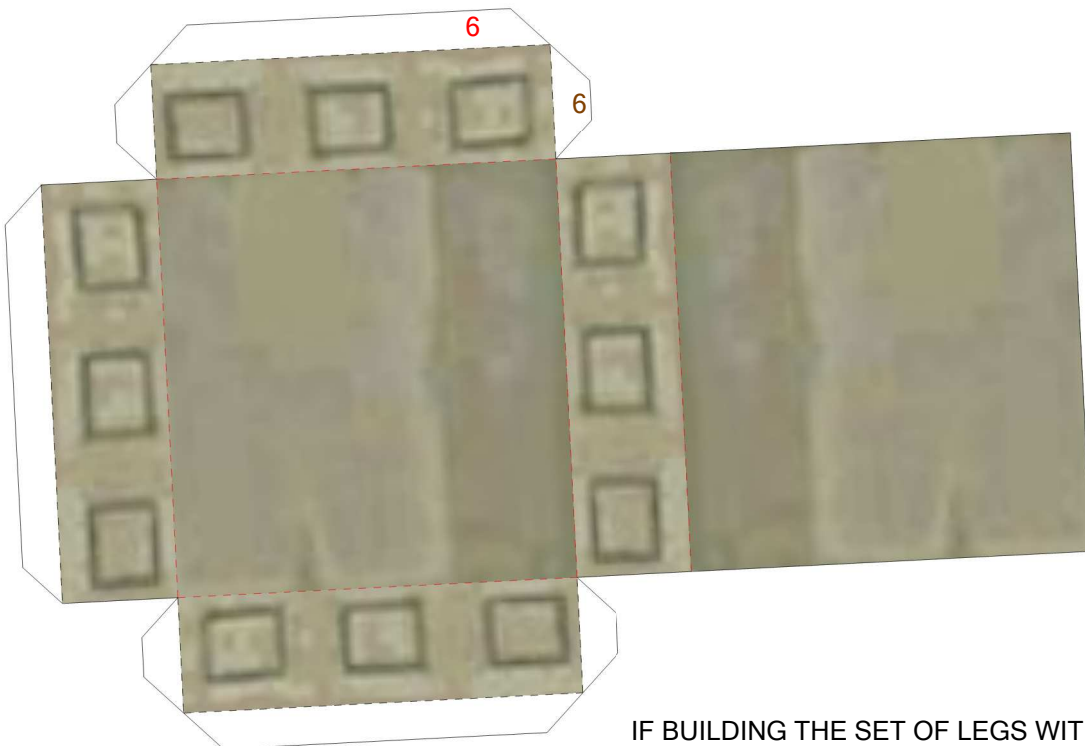


UPPER LEVELED LEGS



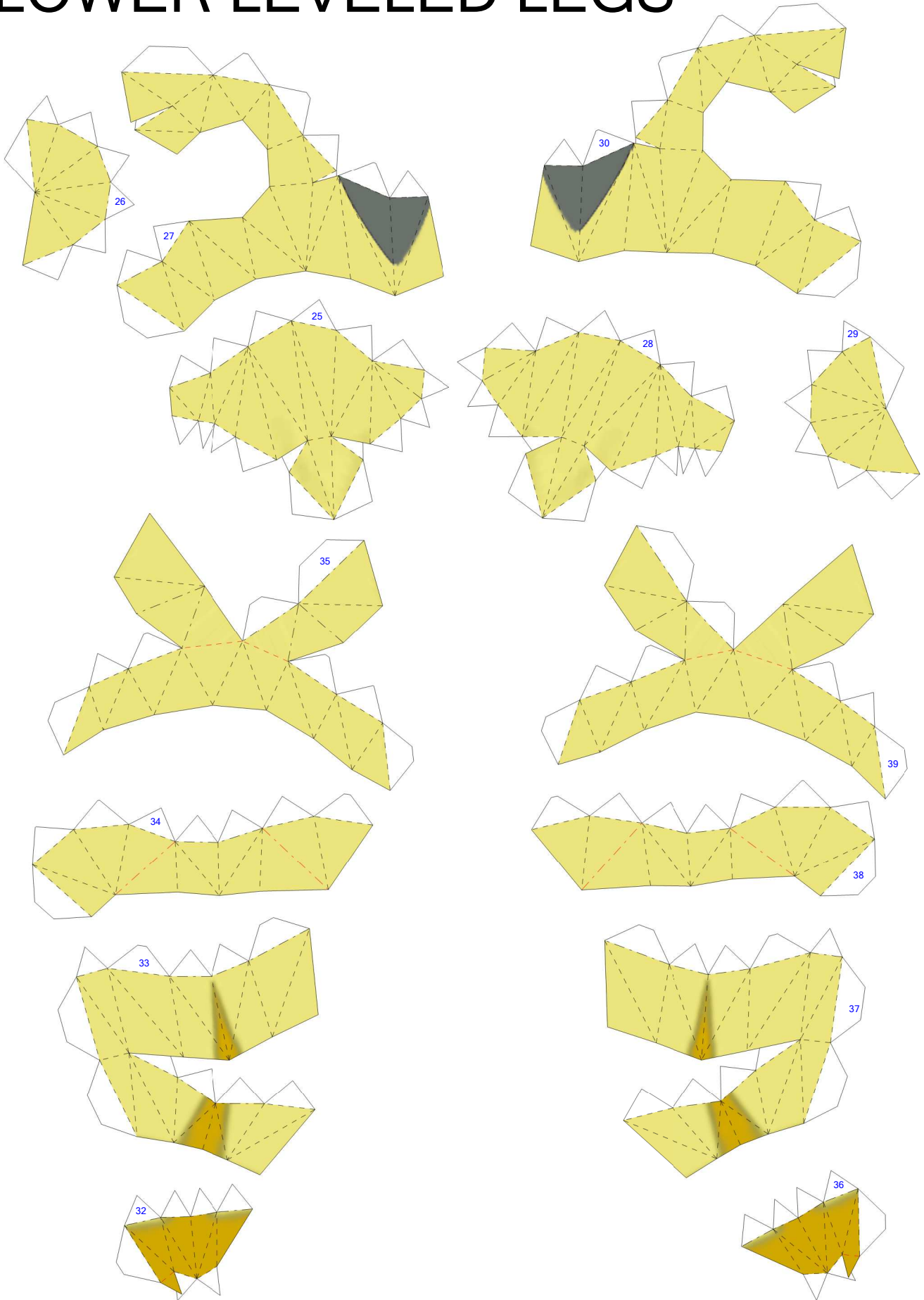


LOWER LEVELED LEGS STAND

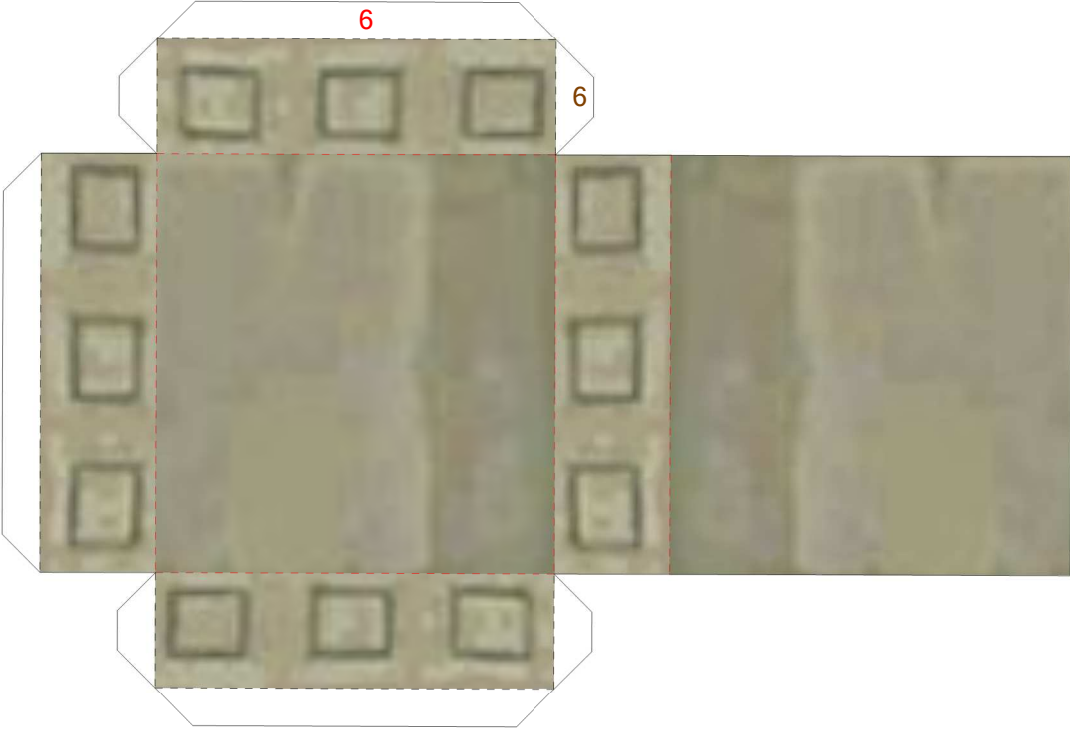
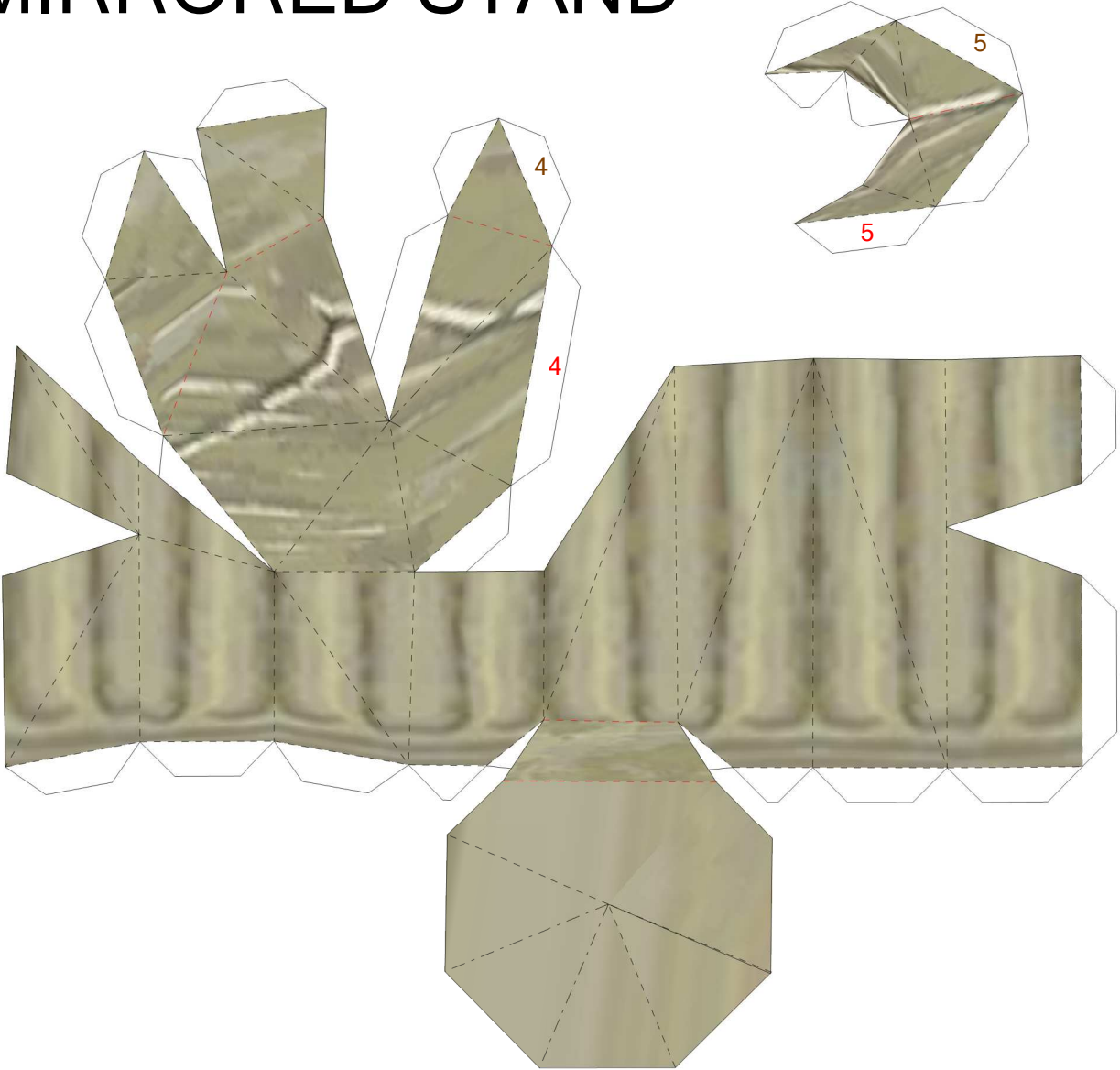


IF BUILDING THE SET OF LEGS WITH THIS STAND,
SKIP PIECE 5 OF THE STAND AND PROCEED TO 6.

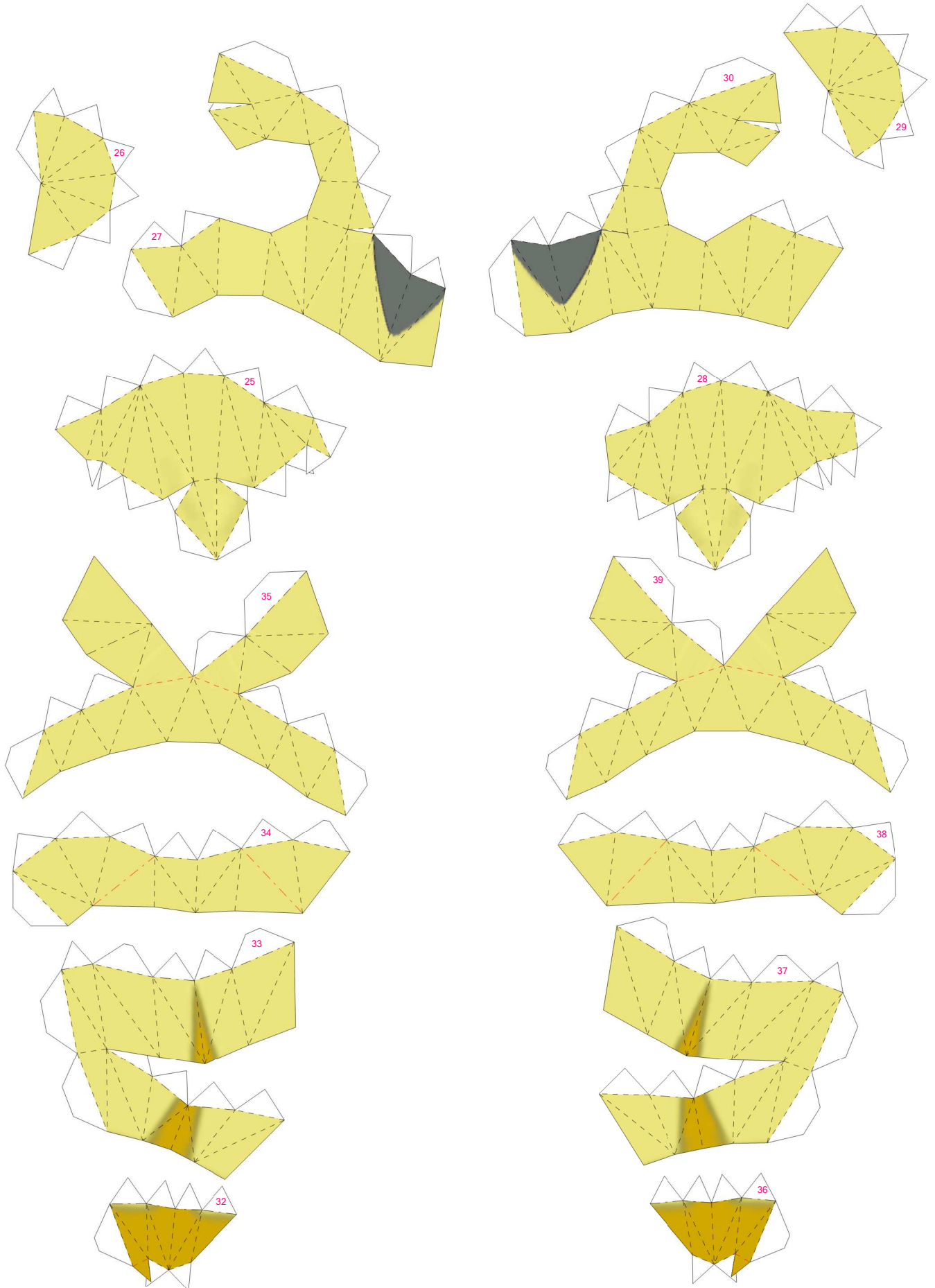
LOWER LEVELED LEGS

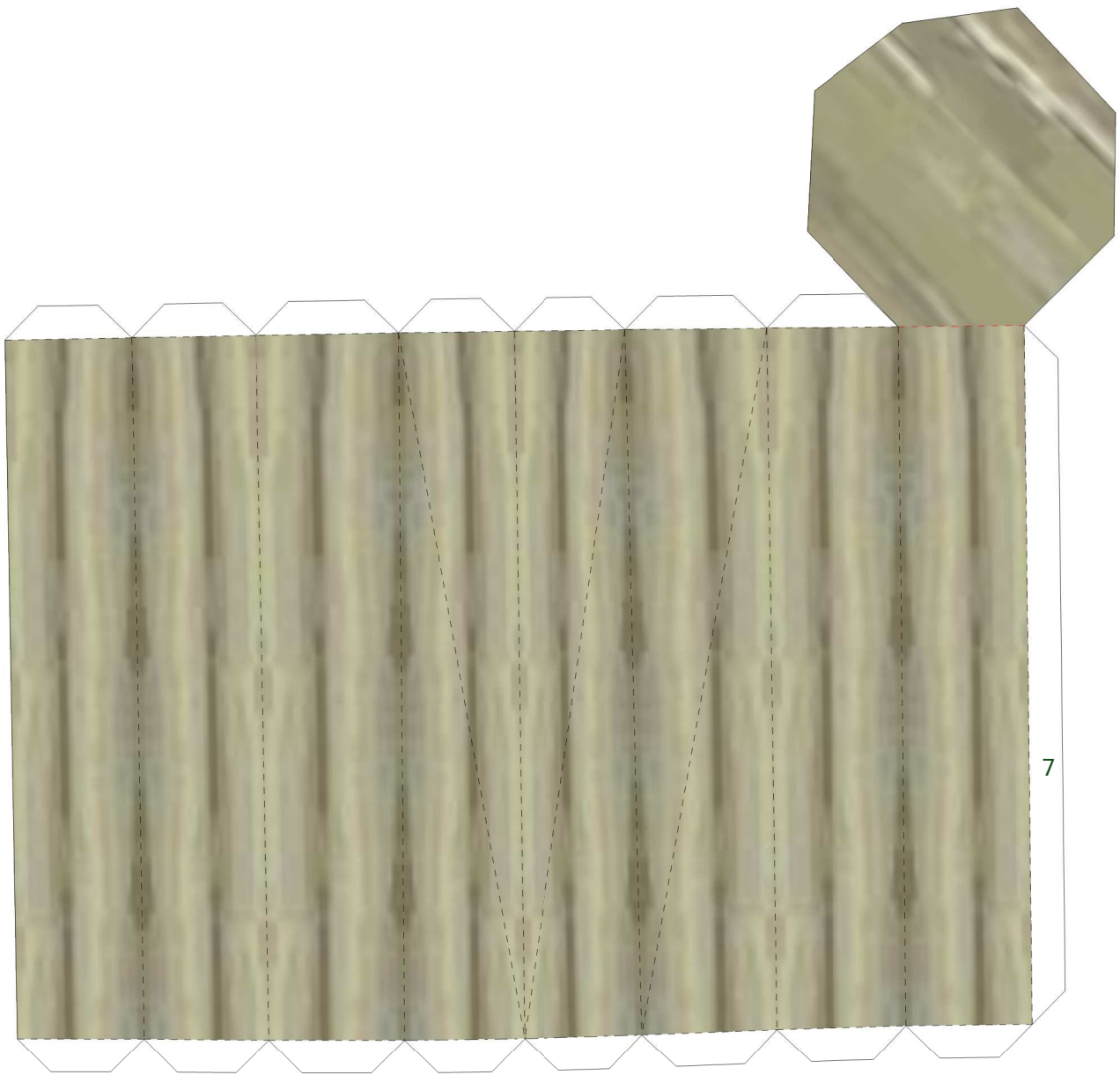


MIRRORED STAND



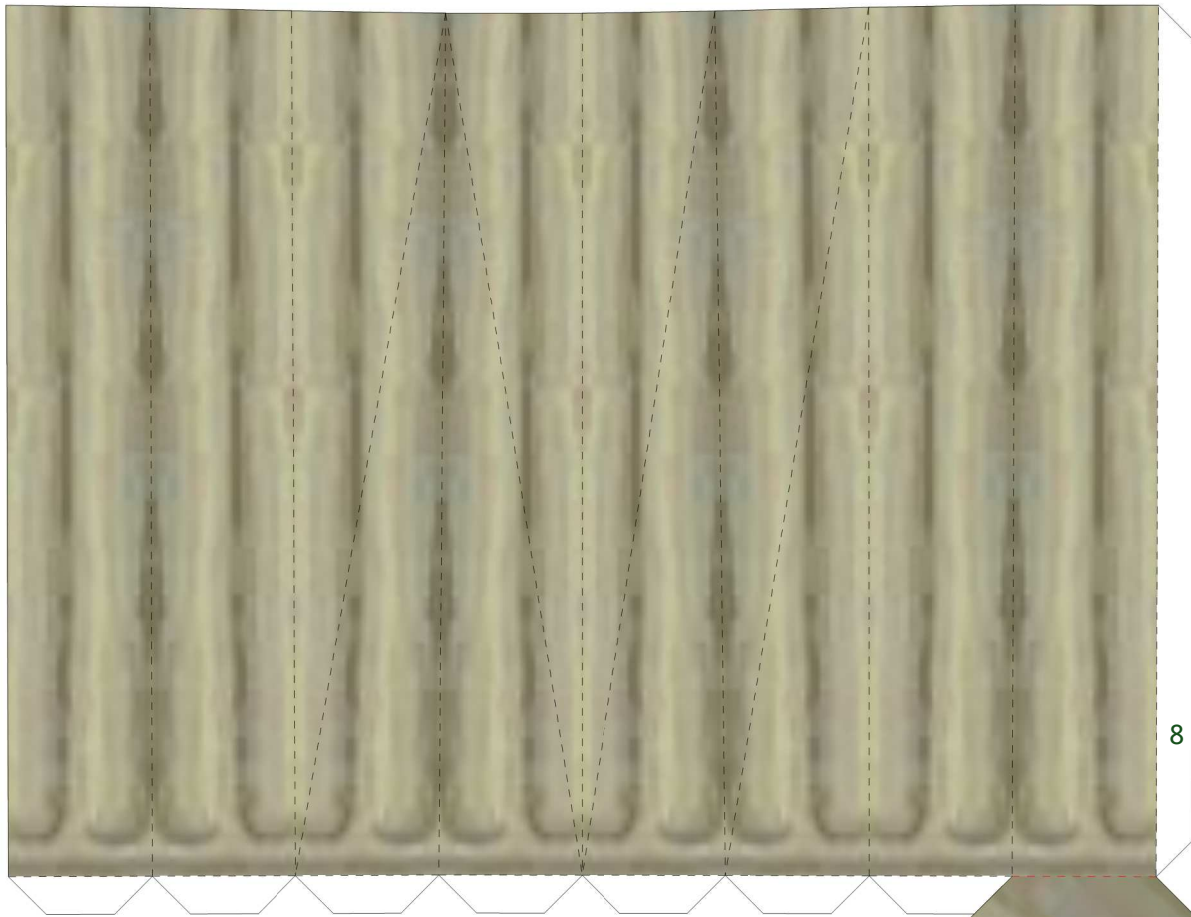
MIRRORED LEGS



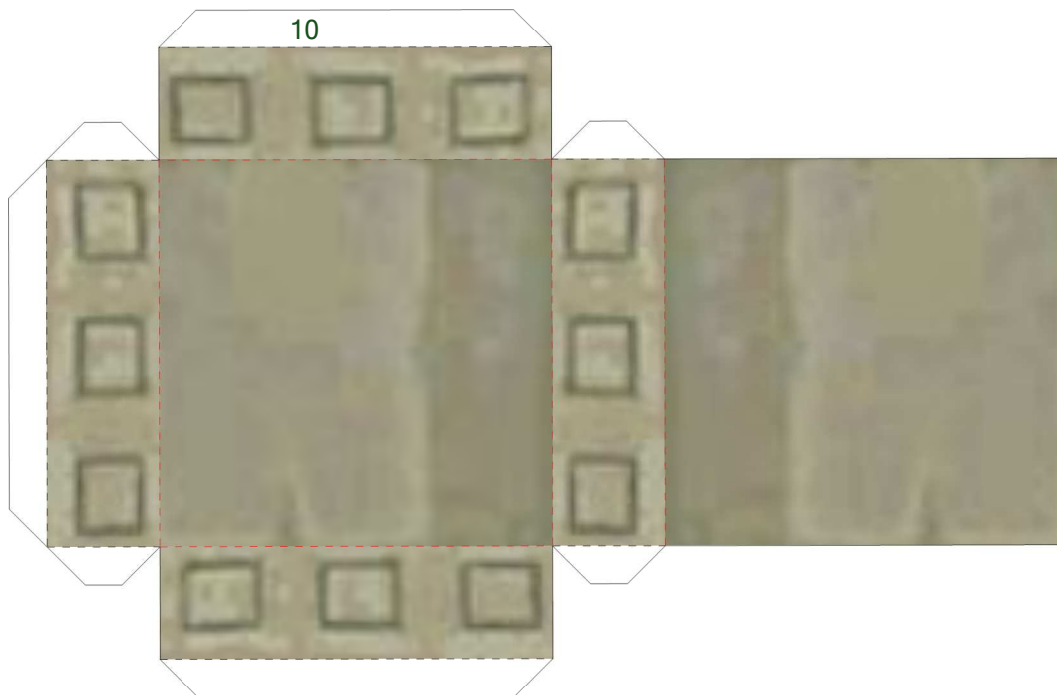


OPTIONAL BACK COLUMN TOP

IF BUILDING THIS COLUMN, SPIK PIECE
9 AND PROCEED TO 10.



OPTIONAL BACK COLUMN BOTTOM



INSTRUCTIONS

There are a ton of options you can follow when building this model. The black numbers on the body refer to the model as shown in the picture.

The head can be built in two ways, the one in the picture and a mirrored one. They are both built the same way, starting at the top and working down. Be careful with the eyes and its connections, there are some small faces there. Both the heads glue on the same place and the connections between them and the body are exactly the same.

Proceed to the torso after the head is built. Join the set 14-22 and glue it at once to the previously built part of the model. Piece 23 goes on the back of the torso. Start it by the part closer to the neck and work down, only gluing the inside tabs of it AFTER the entire piece is placed.

The legs are simple. Just make sure to reinforce the connections between them and the body and the inside of them, since the model is quite heavy. Here you have 4 different sets of legs: the one on the model (black numbers), the one mirrored (pink numbers), the one leveled on a lower level (blue numbers) and the one leveled on a higher level (orange numbers). They all fit the same place and are built the exact same way. Closing the lower part of the legs can offer some trouble, but nothing exaggerated. Reinforcing the inside of them can also come in handy with time.

Glue them to the body BEFORE gluing the belly but after gluing the last segment before the belly. Close the model at the back of the belly.

After the belly is glued, build the ring. If I had to pick the hardest part of the model to build would be the ring. It offers some troubles, for newer builders specially. Following numbers here is important. First, build the back part of each of the four sides of the ring. Start by the tips and BEFORE going to the round part that connects two sides of the ring together, glue the bigger tip to it and the two sides of this bigger segment. Now proceed to the round parts. While building the two lower segments, start the same way: by the tips and join both the sides by the middle round parts. Glue the gems to the ring now, while you still have how to apply pressure from the inside and they won't bother on the gluing of any tabs. Do the same for the other side of the ring. After both sides are built, join them together by the middle part. This connection is pretty simple. Close the ring and glue it to the body. All the connections (back of the belly, front of the ring, back of the ring and front of the legs) are the same, so use that as a reference while gluing the ring to the body. The ring connection is simple, the details are a bit harder to glue. Start with the upper one, pay attention to where

the tabs are glued and the fold lines (the lines that must be folded are indicated in red). Shape that part so the tabs can reach the top of the ring and the top of the belly. The other two detail pieces are a bit harder to glue but the process is the same.

The back part starts with the tail. It shouldn't offer any trouble, just make sure to reinforce the connection between the legs and the body, as you've done with the front legs.

After the model is built, proceed to the base. Here there are another ton of options.

The one shown in the picture is the one numbered in red, there's a simpler one with brown numbers without the space for the back optional column. They both are built the same way, start by the top, build the sides, glue the details on top (front stand and back rock only, the plates and the optional rocks can be left unglued), put the spacers inside so the base won't collapse and close at the bottom.

First glue the stand to the stand base and after that glue the base stand to the base.

Arceus should rest well on it. After the front stand is glued, place arceus on it and glue the back rock where the back left leg stays, so the model won't go back and stands perfectly still. It's a good idea to reinforce the inside of the base, specially the top part.

The spacers go under the front stand, under the back legs and under the optional column, the last one only being necessary if you're building the bigger base. There are other two optional textures for the base included on the download pack, but the use of these require the pdo.

In order to get a better non collapsing result, I suggest reinforcing some parts, like the inside of the legs, the neck, the belly. Keep in mind that this is a hard model and offer some tricky parts, such as the ring. Really take your time, follow the instructions, fold the suggested lines and with some building experience you should be fine.